



CATALOG 2018

MICROSCOPES
FOR INDUSTRY

PART 3

 **euromex**
microscopes holland

PART 1 MICROSCOPES FOR EDUCATION

PART 2 MICROSCOPES FOR LABORATORIES

PART 3 MICROSCOPES FOR INDUSTRY



Accessories

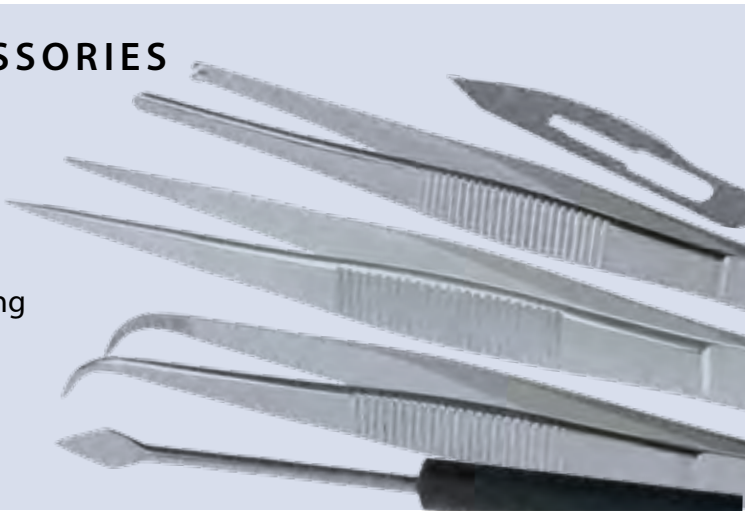
for microscopy

Euromex offers a solution for all microscopy related accessories needed during microscopy sessions. From dissection instruments to stains, cold light sources to LED ring light illuminators, Euromex can provide a wide selection of product accessories

Extend the life of your microscope(s) with our dedicated tools to clean and maintain the mechanical and optical parts

PREPARATION ACCESSORIES

Euromex offers the right tools for sample preparing. Before using a microscope good samples are essential to get the most accurate results



Dissection instruments

- PB.5050** Dissecting needle, straight tip with plastic handle
- PB.5054** Dissecting needle, lancet-shaped with plastic handle
- PB.5056** Blunt-pointed probe, Ø2 mm, length 140 mm
- PB.5058** Section lifter with wooden handle
- PB.5060** Serrated thumb dressing forceps, length 13 mm
- PB.5062** Dressing forceps with blunt tips, length 13 cm
- PB.5064** Dressing forceps with blunt tips, length 20 cm
- PB.5067** Dissecting forceps with sharp tips, length 13 cm
- PB.5069** Dissecting forceps with finely curved sharp tips, length 13 cm
- PB.5077** Cover glass forceps, length 11 cm



SCISSORS AND BLADES

- PB.5080** Dressing scissors with blunt/sharp tip, length 14 cm
- PB.5084** Dissecting scissors, sharp tips, length 11 cm
- PB.5092** Scalpel with blunt tip, length 15 cm
- PB.5094** Scalpel handle no. 4 (for blades PB.5095 and PB.5096)
- PB.5095** Scalpel blades with sharp tip, 5 pieces per set
- PB.5096** Scalpel blades with blunt tip, 5 pieces per set
- PB.5103** Strop, double sided for stropping of scalpels, microtome knives. Includes stropping paste
- PB.5105** Razor plano/concave, for sectioning. With plastic handle
- PB.5106** Microtome knife plano/concave. With fixed handle, length 17 cm



HANDHELD MICROTOMES

- MT.5500** Cylinder microtome. Round stage Ø 70 mm with flat black glass top. Height adjustable with micrometer division 0.01 mm. Complete with plano-concave knife PB.5106 and wooden cabinet
- MT.5501** Cylinder microtome. Identical to MT.5500 but without knife and wooden cabinet
- MT.5503** Handheld microtome. Box type with table clamp and razor blade holder. Thickness adjustment by 0.025 mm intervals. Complete with wooden cabinet



DISSECTION KITS

4-PC Dissection kit
PB.5110 in imitation
leather case

Kit with straight dissecting needle (PB.5050), dissecting forceps (PB.5067), dissecting scissors (PB.5084) and scalpel (PB.5092). Supplied with imitation leather case



PB.5110 ●

6-PC Dissection kit
PB.5111 in plastic case

Kit with straight dissecting needle (PB.5050), lancet-shaped dissecting needle (PB.5054), dissecting forceps (PB.5067), dissecting scissors (PB.5084), scalpel handle no. 4 (PB.5094) and blades (PB.5096). Supplied with plastic case



PB.5111 ●

10-PC Dissection kit
PB.5112 in imitation leather case

Kit with two straight dissecting needles (PB.5050), lancet-shaped dissecting needle (PB.5054), dressing forceps (PB.5062), dissecting forceps (PB.5067), scissors (PB.5080), dissecting scissors (PB.5084), two scalpels (PB.5094), five scalpel blades with straight tip and five blades with blunt tip (PB.5095/PB.5096). Supplied with imitation leather case



PB.5112 ●

9-PC Dissection kit
PB.5114 in wooden cabinet

Kit with two straight dissecting needles (PB.5050), lancet-shaped dissecting needle (PB.5054), dressing forceps (PB.5062), dissecting forceps (PB.5067), scissors (PB.5080), dissecting scissors (PB.5084), two scalpels (PB.5094), five scalpel blades with straight tip and five blades with blunt tip (PB.5095/PB.5096). Supplied with wooden cabinet



PB.5114 ●

6-PC Dissection kit for Koi fish
PB.5115 in plastic case

Dissecting set for Koi fish. Consisting of plastic box with forceps with 1 x 2 points (PB.5060), forceps blunt points, 13 cm (PB.5062), scissors, blunt/ sharp points, 14 cm (PB.5080), microscope scissors, sharp points, 11 cm (PB.5084), blunt-pointed probe (PB.5056), scalpel handle no. 4 (PB.5094), five scalpel blades with straight tip and five blades with blunt tip (PB.5095/PB.5096)



PB.5115 ●

Professional slide preparation kit
PB.5125 in plastic deluxe case

Kit with three prepared slides, 50 microscope slides (PB.5150) and 100 cover glasses (PB.5165). Two microscope slides with cavity. Canada balsam, dissecting needle (PB.5050 and PB.5054). Dissecting forceps (PB.5067), dissecting scissors (PB.5084) and scalpel (PB.5092). Supplied with plastic deluxe case



PB.5125 ●

MICROSCOPE PREPARED SLIDES



Euromex offers teachers, students and microscopy amateurs a wide range of quality micro-slides, which can be used immediately in biology classes as introduction to histology, zoology and botany

25 Slides
set of histology, zoology and botany
PB.5211 for education

Set with 25 microscopy slides for education: histological samples of mammals, zoology and botany.
All microscope slides are supplied in a plastic box for 25 slides. The set contains:

HISTOLOGY

- SH.1011 Hard bone grinding, human, section
- SH.1045 Skeletal muscle, dog, l.s and c.s.
- SH.1072 Skin section through hair follicle, human
- SH.1078 Stratified flat epithelium, dog, section
- SH.1150 Blood smear, human, Giemsa stained

ZOOLOGY

- SZ.1510 Amoeba proteus, w.m.
- SZ.1580 Hydra with bud, w.m.
- SZ.1640 Lumbricus - earthworm, c.s.
- SZ.1655 Daphnia sp., water flea, w.m.
- SZ.1715 Musca domestica, house fly, mouth parts
- SZ.1717 Musca domestica, house fly, leg with clinging pads
- SZ.1719 Musca domestica, house fly, wing w.m.

BOTANY

- SB.2006 Allium cepa, onion, scale epidermis, w.m.
- SB.2009 Allium cepa, onion, mitosis root tip, l.s.
- SB.2055 Zea mays, corn, stem, cs.
- SB.2060 Triticum aestivum, wheat, stem, c.s.
- SB.2070 Helianthus, sunflower, young stem, c.s.
- SB.2130 Helianthus, sunflower, leaf, c.s.
- SB.2205 Monocot/dicot flower, zea mays/ranunculus, c.s.
- SB.2212 Lilium, lily, ovary, c.s.
- SB.2335 Mnium, w.m.
- SB.2355 Rhizopus nigricans, bread mold, developed sporangia
- SB.2377 Diatoms, w.m.
- SB.2381 Spirogyra sp., vegetative mass, w.m.
- SB.2405 Dental plaque, smear

25 Slides set of histology, zoology and botany
PB. 5212 for education

Set with 25 microscopy slides for education: histological samples of mammals, zoology and botany.
All microscope slides are supplied in a plastic box for 25 slides. The set contains:

HISTOLOGY

- SH.1001 Loose connective tissue, rabbit
- SH.1005 Hyaline cartilage rabbit, section
- SH.1160 Lymph node, rabbit, section
- SH.1230 Small intestine, dog, c.s.
- SH.1250 Liver, pig, section
- SH.1430 Cerebrum section, dog

ZOOLOGY

- SZ.1520 Paramecium, w.m.
- SZ.1625 Schistosoma Japonicum, fluke eggs, bilharziose
- SZ.1630 Taenia, tapeworm pig, mature proglottid, w.m.
- SZ.1635 Ascaris megalocephala, horse roundworm, female + male, c.s.
- SZ.1708 Apis mellifica, honey bee, mouth parts
- SZ.1725 Periplaneta, cockroach, mouth parts of chewing type
- SZ.1730 Pieres brassicae, cabbage-white butterfly, mouth, w.m
- SZ.1750 Periplaneta, cockroach, spiracle of insect, w.m.

BOTANY

- SB.2095 Monocot/dicot stem, zea mays/pumpkin, c.s.
- SB.2105 Hibiscus, young stem, c.s.
- SB.2110 Cucurbita, pumpkin, stem, l.s.
- SB.2115 Sambucus, elderberry or Morus Alba, mulberry, stem with cork cambium + lenticels, c.s.
- SB.2160 Lilium, lily leaf, c.s.
- SB.2225 Zea mays, corn, corn seed with embryo, l.s.
- SB.2235 Pirus, pear, stone cells, section
- SB.2240 Triticum aestivum, wheat, kernel, l.s.
- SB.2305 Cyrtomium, holly fern, c.s. of rhizom
- SB.2310 Cyrtomium, holly fern, section
- SB.2386 Oscillatoria, blue-green algae

USED ABBREVIATIONS	
c.s.	cross section
l.s.	longitudinal section
w.m.	whole mount

25 Slides set of histology, zoology and botany
PB. 5213 for education

Set with 25 microscopy slides for education: histological samples of mammals, zoology and botany.
All microscope slides are supplied in a plastic box for 25 slides. The set contains:

HISTOLOGY

- SH.1006 Elastic cartilage, rabbit
- SH.1040 Smooth muscle, teased preparation, rabbit, l.s.+c.s.
- SH.1110 Lung with injected blood vessels, rabbit, c.s.

- SH.1130 Artery and vein, rabbit, c.s.
- SH.1410 Nerve, rabbit, c.s. and l.s

ZOOLOGY

- SZ.1535** Euglena virides, a flagellate with eyespot
- SZ.1586** Hydra, w.m. of tentacles
- SZ.1620** Schistosoma Japonicum, female, w.m.
- SZ.1705** Apis mellifica, honey bee, posterior leg, w.m.
- SZ.1733** Pieres brassicae, cabbage-white butterfly, part of wing
- SZ.1738** Locusta, grasshopper, mouth parts, w.m.
- SZ.1780** Insects - four types of legs, honey bee, house fly, house mosquito, spider
- SZ.1877** Rana sp, frog, blood smea

BOTANY

- SB.2011** Zea mays, corn root tip with hairs, l.s.
- SB.2020** Helianthus, sunflower, old root, c.s.
- SB.2025** Monocot/dicot plant roots, zea mays/helantius, c.s.
- SB.2040** Solanum tuberosum, potato, starch grains
- SB.2075** Tilia, lime tree, one year stem, c.s.
- SB.2091** Ceratophyllum Demersum, hornwort, leave with air stomas, c.s.
- SB.2100** Pelargonium hortorum, geranium, stem c.s.
- SB.2337** Mnium, antheridial branch, l.s.
- SB.2339** Mnium, archegonial branch, l.s.
- SB.2373** Coprinus, ink caps mushroom, section of pleus
- SB.2380** Spirogyra sp. in conjugation
- SB.2420** 3 types of bacteria, cocci, bacilli, spirelli

25 Slides set of histology, zoology and botany
PB. 5214 for education

Set with 25 microscopy slides for education: histological samples of mammals, zoology and botany.
All microscope slides are supplied in a plastic box for 25 slides. The set contains:

HISTOLOGY OF MAMMALS

- SH.1060** Tendon l.s. (Dense connetive tissue), dog
- SH.1075** Skin section with sweat gland, human
- SH.1330** Testis rabbit, c.s
- SH.1340** Ovary rabbit with developped eggs
- SH.1360** Sperm, human, smear
- SH.1490** Retina, rabbit, sec.

ZOOLOGY

- SZ.1522** Paramecium conjugation w.m.
- SZ.1524** Paramecium in fission, w.m.
- SZ.1540** Trachelomonas, a free swimming type euglena
- SZ.1585** Hydra with endoderm + ectoderm, c.s.
- SZ.1710** Apis mellifica - honey bee compound eye, w.m.
- SZ.1720** Culex pipiens - house mosquito, larva w.m.
- SZ.1724** Giant chromosomes of salivary gland,w.m
- SZ.1810** Mya arenaria, clam gill, c.s.
- SZ.1860** Section through gonads and gills, l.s.

BOTANY

- SB.2015** Ranunculus, buttercup, root c.s.
- SB.2076** Tilia, lime tree, 1, 2 & 3 year stem, c.s. on one slide
- SB.2080** Pinus - pine tree, stem l.s.
- SB.2140** Triticum, wheat, leaf, c.s.
- SB.2150** Monocot/dicot leaves,zea mays/ ligustrum lucidum, c.s.
- SB.2230** Pinus, pine tree, male (cone) globose fruit l.s.
- SB.2232** Pinus, pine tree, female (cone) globose fruit l.s.
- SB.2315** Sporophyt w.m.
- SB.2320** Cyrtomium, fern, leaf with sporangia
- SB.2384** Volvox sp. w.m.

25 Slides set of histology, zoology and botany
PB. 5215 for education

Set with 25 microscopy slides for education: histological samples of mammals, zoology and botany.
All microscope slides are supplied in a plastic box for 25 slides. The set contains:

HISTOLOGY

- SH.1043** Cardiac muscle, dog, l.s.
- SH.1070** Squamous epithelium, human, isolated cells from mouth, smear
- SH.1315** Kidney rat, sec. cortex & medulla
- SH.1420** Cerebellum section, dog
- SH.1450** Spinal cord, rabbit, c.s.
- SH.1470** Taste buds, rabbit, l.s.

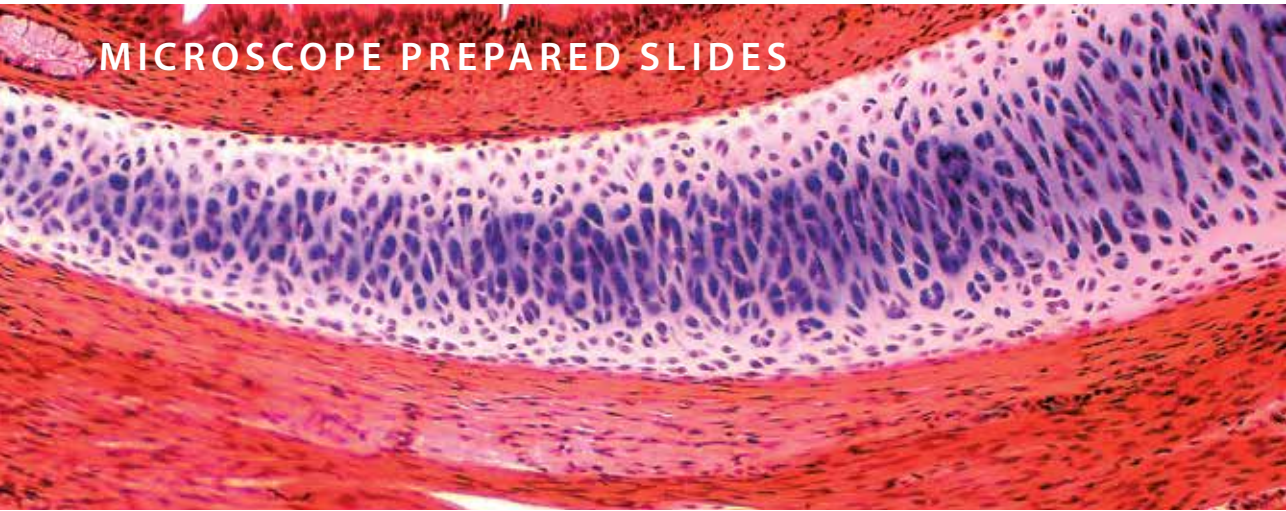
ZOOLOGY

- SZ.1610** Planaria, flat worm, injected intestinal tube, w.m.
- SZ.1636** Ascaris megaloccephala, horse roundworm, mitosis eggs
- SZ.1760** Ctenocephalus canis, dog flea, w.m.
- SZ.1770** Tetranychus, red spider mite, w.m.
- SZ.1930** Bird, wing and down feather, section
- SZ.1940** Chicken, embryo 48 hours, sagittal section

BOTANY

- SB.2090** Hydrilla verticillata, hydrilla stem tip, l.s.
- SB.2112** Cucurbita, pumpkin, stem, c.s.
- SB.2135** Nerium oleander, leaf with sunken stomata, c.s.
- SB.2210** Lilium, lily, anther with mature pollen, c.s.
- SB.2214** Lilium, lily, pollen, different stages of meiosis
- SB.2220** Capsella, shepherds’ purse, ovary w. embryo in pre-cotyledon stadium, l.s.
- SB.2222** Capsella, shepherds’ purse, ovary w. embryo in cotyledon stadium, l.s.
- SB.2234** Pinus, pine tree, pollen, w.m.
- SB.2330** Marchantia, liverworts, thallus with gemma cup, c.s.
- SB.2360** Saccaromyces sp., yeast, budding, w.m.
- SB.2365** Penicillium sp., w.m.
- SB.2410** Streptococcus lactis, milk bacteria, smear
- SB.2415** Bacillus subtilis, hay bacteria, smear

USED ABBREVIATIONS	
c.s.	cross section
l.s.	longitudinal section
w.m.	whole mount



MICROSCOPE PREPARED SLIDES

23 Slides of mammal histology

PB.5221 set for education

Set with 23 microscopy slides for education: histological samples of mammals.
All microscope slides are supplied in a plastic box for 25 slides. The set contains:

EPITHELIUM AND CONNECTIVE TISSUES

- SH.1001** Loose connective tissue, rabbit
- SH.1005** Hyaline cartilage, rabbit, section
- SH.1011** Hard bone grinding, human, section
- SH.1049** Muscle types, striated, smooth, heart muscle, dog, l.s.
- SH.1060** Tendon, dog, l.s.
- SH.1070** Squamous epithelium, human, isolated cells from mouth, smear
- SH.1072** Skin section through hair follicle, human
- SH.1078** Stratified flat epithelium, dog, section

RESPIRATORY, BLOOD CIRCULATION AND ENDOCRINE SYSTEM

- SH.1120** Trachea rabbit, c.s.
- SH.1130** Artery and vein, rabbit, c.s.
- SH.1150** Blood smear, human, Giemsa stained

DIGESTIVE SYSTEM

- SH.1210** Stomach wall, dog, section
- SH.1230** Small intestine, dog, c.s.
- SH.1250** Liver, pig, section

URINARY AND GENITAL SYSTEM

- SH.1310** Injected kidney, rabbit, sec.
- SH.1330** Testis, rabbit, c.s.
- SH.1340** Ovary with developed eggs, rabbit
- SH.1376** Human chromosomes in blood, female

NERVOUS SYSTEM AND SENSORY ORGANS

- SH.1410** Nerve, rabbit, c.s. and l.s.
- SH.1430** Cerebrum section, dog
- SH.1450** Spinal cord, rabbit, c.s.
- SH.1470** Taste buds, rabbit, l.s.
- SH.1490** Retina, rabbit, sec.



23 Slides of mammal histology

PB.5222 set for education

Set with 23 microscopy slides for education: histological samples of mammals.
All microscope slides are supplied in a plastic box for 25 slides. The set contains:

EPITHELIUM AND CONNECTIVE TISSUES

- SH.1006** Elastic cartilage, rabbit
- SH.1012** Hard bone grinding of rabbit, tooth, de-calcium
- SH.1040** Smooth muscle, teased preparation, rabbit, l.s.+c.s.
- SH.1043** Cardiac muscle, dog, l.s.
- SH.1045** Skeletal muscle, dog, l.s and c.s.
- SH.1075** Skin section with sweat gland, human
- SH.1080** Ciliated epithelium, trachea, rabbit

RESPIRATORY, BLOOD CIRCULATION AND ENDOCRINE SYSTEM

- SH.1110** Lung with injected blood vessels, rabbit, c.s.
- SH.1140** Pancreas, rabbit, section
- SH.1160** Lymph node, rabbit, section
- SH.1170** Thyroid gland, rabbit, section
- SH.1180** Adrenal gland, rabbit, section

DIGESTIVE SYSTEM

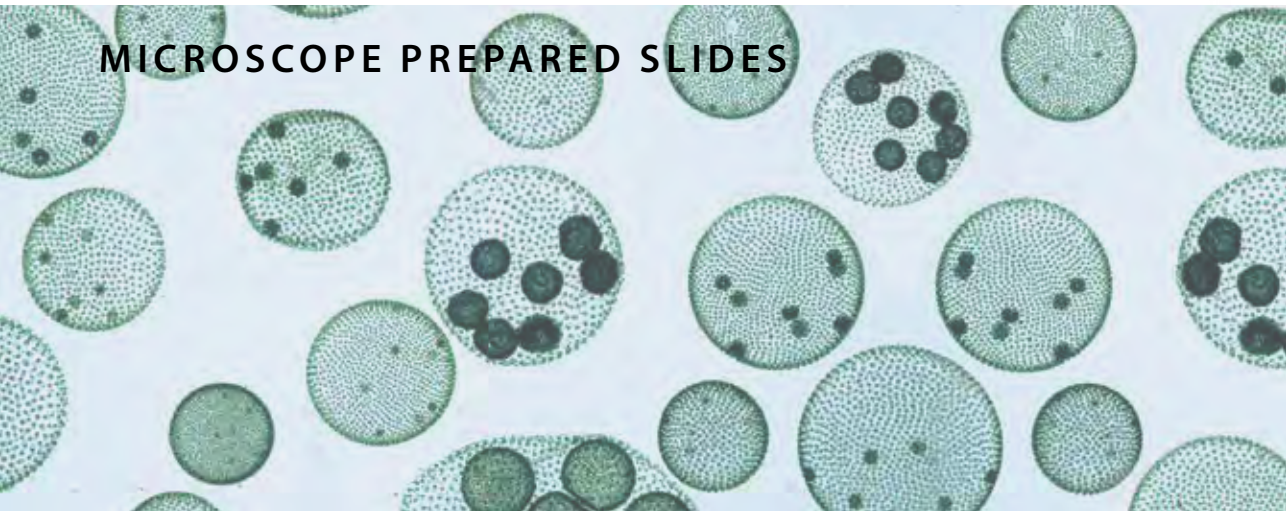
- SH.1220** Oesophagus dog, c.s.
- SH.1235** Large intestine, dog, c.s.
- SH.1260** Gall bladder, dog, section
- SH.1280** Golgi apparatus in epithelial cells of intestine, dog

URINARY AND GENITAL SYSTEM

- SH.1315** Kidney, rat, sec. cortex & medulla
- SH.1360** Sperm, human, smear
- SH.1375** Human chromosomes in blood, male
- SZ.1724** Fruitfly, drosophila, giant chromosomes of salivary gland, w.m.

NERVOUS SYSTEM AND SENSORY ORGANS

- SH.1415** Motor nerve cells with end plates, rabbit, w.m.
- SH.1420** Cerebellum section, dog
- SH.1480** Eyeball section, rabbit, sagittal section



MICROSCOPE PREPARED SLIDES



10 Slides of zoology and botany

PB.5204 set for hobby

Set with 10 prepared microscopy slides for hobby: zoology and botany.
All microscope slides are supplied in a plastic box with transparent cover for 25 slides. The set contains:

ZOOLOGY

- SH.1040** Smooth muscle, teased preparation, rabbit, l.s.and c.s.
- SH.1110** Lung with injected blood vessels, rabbit, c.s.
- SZ.1708** Apis mellifica, honey bee, mouth parts
- SZ.1733** Pieris brassicae, cabbage-white butterfly, part of wing
- SZ.1877** Rana sp, frog, blood smear
- SB.2015** Ranunculus, buttercup, root, c.s.

BOTANY

- SB.2160** Lilium, lily leaf, c.s.
- SB.2222** Capsella, shepherds' purse, ovary w. embryo in cotyledon stadium, l.s.
- SB.2374** Aspergillus, brown mold, w.m.
- SB.2384** Volvox sp., w.m.

USED ABBREVIATIONS	
c.s.	cross section
l.s.	longitudinal section
w.m.	whole mount

25 Slides of histology, zoology and botany

PB.5218 set for hobby

Set with 25 prepared microscopy slides for hobby: zoology and botany.
All microscope slides are supplied in a plastic box with transparent cover for 25 slides. The set contains:

HISTOLOGY OF HUMAN AND MAMMALS

- SH.1072** Skin section through hair follicle, human
- SH.1150** Blood smear human, Giemsa stained
- SH.1415** Motor nerve cells with end plates, rabbit w.m.
- SH.1470** Taste buds, rabbit, l.s.

BOTANY

- SB.2009** Allium cepa, onion, mitosis root tip, l.s.
- SB.2055** Zea mays, corn, stem, cs.
- SB.2075** Tilia, lime tree, one year stem, c.s.
- SB.2100** Pelargonium hortorum, geranium, stem c.s.
- SB.2112** Cucurbita, pumpkin, stem, c.s.
- SB.2130** Helianthus, sunflower, leaf, c.s.
- SB.2135** Nerium oleander, leaf with sunken stomata, c.s.
- SB.2210** Lilium, lily, anther with mature pollen, c.s.
- SB.2225** Zea mays, corn, corn seed with embryo, l.s

ZOOLOGY

- SZ.1520** Paramecium, w.m.
- SZ.1535** Euglena virides, a flagellate with eyespot
- SZ.1580** Hydra with bud, w.m.
- SZ.1630** Taenia, tapeworm pig, mature proglottid, w.m.
- SZ.1635** Ascaris megalocephala, horse roundworm, female and male, c.s.
- SZ.1640** Lumbricus, earthworm, c.s.
- SZ.1655** Daphnia sp., water flea, w.m.
- SZ.1705** Apis mellifica, honey bee, posterior leg, w.m.
- SZ.1710** Apis mellifica, honey bee compound eye, c.s.
- SZ.1719** Musca domestica, house fly, wing w.m.
- SZ.1722** Culex pipiens, house mosquito, female, mouth parts
- SZ.1724** Fruitfly, drosophila, giant chromosomes of salivary gland, w.m.

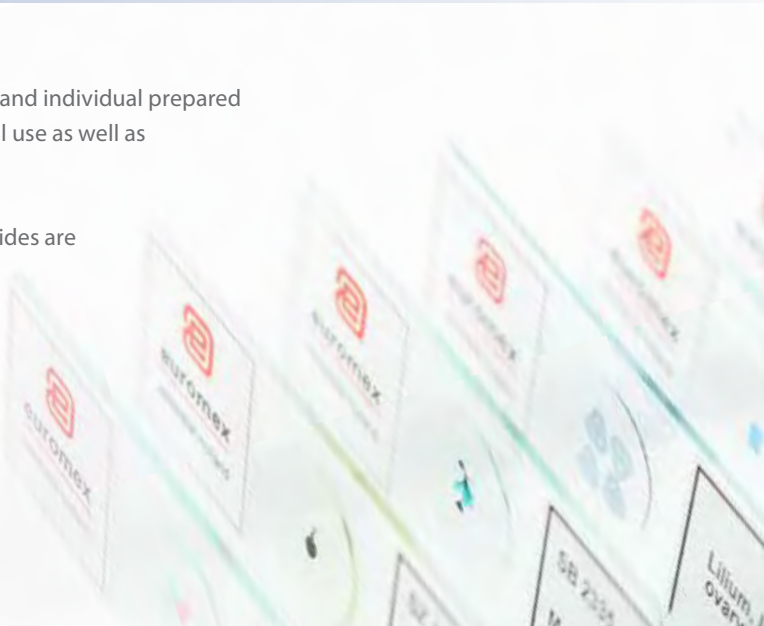
MICROSCOPE PREPARED SLIDES



Individual EuroSlides
Prepared slides

Euromex supplies complete sets and individual prepared microscope slides for educational use as well as for the hobby market

These high quality microscope slides are usually supplied directly from stock, at the very best prices. The slides on the next page are separately available



HOW TO ORDER INDIVIDUAL EUROSLIDES

- Minimum purchase quantity is 10 pieces of the same slide
- The individual slides always have to be ordered together with a box.
Available is: plastic box PB.5181 (for 25 slides)

Individual EuroSlides
for Histology

These histological microscope slides consist of sample of epithelium and connective tissues, the respiratory system, blood circulation, endocrine system, digestive system, urinary and genital systems, nervous system and sensory organs

EPITHELIUM AND CONNECTIVE TISSUES

- SH.1001** Loose connective tissue, rabbit
- SH.1005** Hyaline cartilage rabbit, section
- SH.1006** Elastic cartilage, rabbit
- SH.1011** Hard bone grinding, human, section
- SH.1012** Hard bone grinding of rabbit, tooth, decalcium
- SH.1040** Smooth muscle, teased preparation, rabbit, l.s. and c.s.
- SH.1045** Skeletal muscle, dog, l.s. and c.s.
- SH.1049** Muscle types, striated, smooth, heart muscle, dog, l.s.
- SH.1060** Tendon, dog, l.s.
- SH.1072** Skin section through hair follicle, human
- SH.1078** Stratified flat epithelium, dog, section
- SH.1080** Ciliated epithelium, trachea, rabbit

RESPIRATORY, BLOOD CIRCULATION
AND ENDOCRINE SYSTEM

- SH.1110** Lung with injected blood vessels, rabbit, c.s.
- SH.1120** Trachea, rabbit, c.s.
- SH.1130** Artery and vein, rabbit, c.s.
- SH.1140** Pancreas, rabbit, section
- SH.1150** Blood smear, human, Giemsa stained
- SH.1160** Lymph node, rabbit, section

DIGESTIVE SYSTEM

- SH.1220** Oesophagus, dog, c.s.
- SH.1230** Small intestine, dog, c.s.
- SH.1250** Liver, pig, section

URINARY AND GENITAL SYSTEM

- SH.1310** Injected kidney, rabbit, section
- SH.1330** Testis, rabbit, c.s.
- SH.1340** Ovary with developed eggs, rabbit
- SH.1360** Sperm, human, smear

NERVOUS SYSTEM
AND SENSORY ORGANS

- SH.1410** Nerve, rabbit, c.s. and l.s.
- SH.1415** Motor nerve cells with end plates, rabbit, w.m.
- SH.1420** Cerebellum section, dog
- SH.1450** Spinal cord, rabbit, c.s.
- SH.1470** Taste buds, rabbit, l.s.
- SH.1490** Retina, rabbit, section

USED ABBREVIATIONS

c.s.	cross section
l.s.	longitudinal section
w.m.	whole mount

Individual EuroSlides for Zoology

This series of zoology microscopy slides consists of samples with single-cell organisms (protozoa), coelenterate, worms (helminthes), Crustaceans (crustaceae), insects and amphibians

PROTOZOA

- SZ.1510** Amoeba proteus, w.m.
- SZ.1520** Paramecium, w.m.
- SZ.1522** Paramecium in conjugation w.m.
- SZ.1535** Euglena virides, a flagellate with eyespot
- SZ.1540** Trachelomonas, a free swimming type euglena

COELENTERATA

- SZ.1580** Hydra with bud, w.m.

HELMINTHES

- SZ.1630** Taenia, tapeworm pig, mature proglottid, w.m.
- SZ.1635** Ascaris megalcephala, horse roundworm, female + male c.s.
- SZ.1636** Ascaris megalcephala, horse roundworm, mitosis eggs
- SZ.1640** Lumbricus, earthworm, c.s.

CRUSTACEANS

- SZ.1655** Daphnia sp., water flea, w.m.

INSECTS

- SZ.1705** Apis mellifica, honey bee, posterior leg, w.m.
- SZ.1708** Apis mellifica, honey bee, mouth parts
- SZ.1710** Apis mellifica, honey bee compound eye, c.s.
- SZ.1719** Musca domestica, house fly, wing, w.m.
- SZ.1720** Culex pipiens, house mosquito, larva, w.m.
- SZ.1722** Culex pipiens, house modquito, female, mouth parts
- SZ.1724** Drosophila, fruit fly, giant chromosomes of salivary gland, w.m.
- SZ.1730** Pieres brassicae, cabbage-white butterfly, mouth, w.m.
- SZ.1733** Pieres brassicae, cabbage-white butterfly, part of wing
- SZ.1738** Locusta, grasshopper, mouth parts, w.m.
- SZ.1760** Ctenocephalus canis, dog flea, w.m.
- SZ.1780** Insects- four types of legs, honey bee, house fly, house modquito, spider

AMPHIBIANS

- SZ.1877** Rana sp, frog, blood smear
- SZ.1880** Frog uncleaved egg, c.s.
- SZ.1881** Frog egg, two cells stadium, c.s.
- SZ.1883** Frog egg, advanced cleavage c.s.
- SZ.1885** Frog egg, blastula phase, c.s.
- SZ.1887** Frog egg, early gastrula phase, c.s.
- SZ.1889** Frog egg, advanced gastrula phase, c.s.

Individual EuroSlides for Botany

This series of botanic microscopy slides consists of samples of sections of roots, stems, leaves, flowers, fruits and seeds, ferns and mosses, fungi, algae and bacteria

ROOTS

- SB.2006** Allium cepa, onion, scale epidermis, w.m.
- SB.2009** Allium cepa, onion, mitosis root tip, l.s.
- SB.2015** Ranunculus, buttercup, root, c.s.
- SB.2020** Helianthus, sunflower, old root, c.s.
- SB.2025** Monocot/dicot plant roots, zea mays/helantius, c.s.
- SB.2040** Solanum tuberosum, potato, starch grains

STEMS

- SB.2055** Zea mays, corn, stem, c.s.
- SB.2060** Triticum aestivum, wheat, stem, c.s.
- SB.2070** Helianthus, sunflower, young stem, c.s.
- SB.2076** Tilia, lime tree, 1, 2 and 3 year stems on one slide, c.s.
- SB.2095** Monocot/dicot stem, corn/pumpkin, c.s.
- SB.2100** Pelargonium hortorum, geranium, stem, c.s.
- SB.2105** Hibiscus, young stem, c.s.
- SB.2115** Sambucus, elderberry or Morus Alba, mulberry, stem with crok cambium and lenticels, c.s.

LEAVES

- SB.2130** Helianthus, sunflower, leaf, c.s.
- SB.2135** Nerium oleander, leaf with sunken stomata, c.s.
- SB.2140** Triticum, wheat, leaf, c.s.
- SB.2150** Monocot/dicot leaves, zea mays/ligustrum lucidum, c.s.
- SB.2160** Lilium, lily leaf, c.s.

FLOWERS, FRUITS AND SEEDS

- SB.2205** Monocot/dicot flower, zea mays/ranunculus, c.s.
- SB.2210** Lilium, lily, anther with mature pollen, c.s.
- SB.2212** Lilium, lily, overy, c.s.
- SB.2214** Lilium, lily, pollen, different stages of meiosis
- SB.2220** Capsella, shepherds' purse, ovary w. embryo in pre-cotyledon stadium, l.s.
- SB.2222** Capsella, sheperd's purse, ovary w. embryo in cotyledon statium, l.s.
- SB.2225** Zea mays, corn seed with embryo, l.s.
- SB.2232** Pinus, pine tree, female (cone) globose fruit, l.s.
- SB.2240** Triticum aestivum, wheat, kernel, l.s.

FERNS AND MOSSES

- SB.2315** Cyrtomium, holly fern, prothallium with young sporophyt, w.m.
- SB.2337** Mnium, antheridial branch, l.s.
- SB.2339** Mnium, archegonial branch, l.s.

FUNGI

- SB.2360** Saccaromyces sp., yeast, budding, w.m.
- SB.2365** Penicillium sp., w.m.
- SB.2373** Coprinus, ink caps mushroom, section of pileus
- SB.2374** Aspergillus, brown mold, w.m.

ALGAE

- SB.2377** Diatoms, w.m.
- SB.2380** Spirogyra sp. in conjugation
- SB.2384** Volvox sp., w.m.

BACTERIA

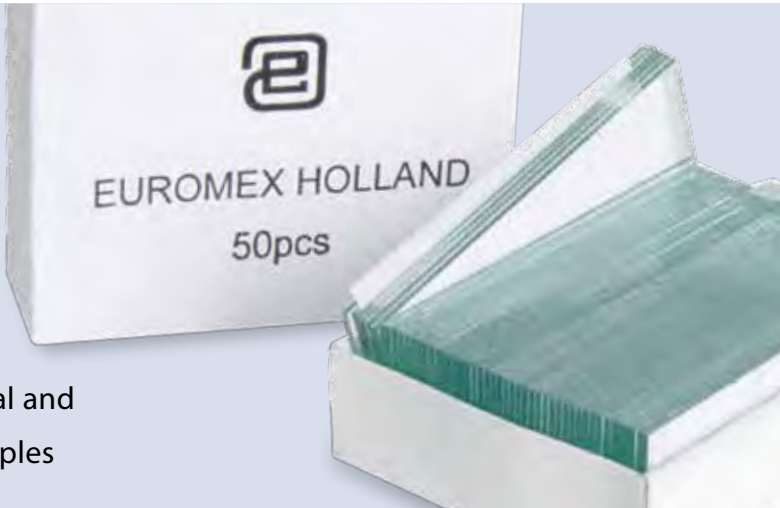
- SB.2420** 3 types of bacteria, cocci, bacilli, spirelli

HOW TO ORDER INDIVIDUAL EUROSLIDES

- Minimum purchase quantity is 10 pieces of the same slide
 - The individual slides always have to be ordered together with a box.
- Available is: plastic box PB.5181 (for 25 slides)

DISPOSABLES

Microscope slides are essential and are the platform for your samples



Disposables

MICROSCOPE SLIDES AND COVER GLASSES

- PB.5150** Microscope slides 76 x 26 mm, half white glass, cut edges. 50 pieces
- PB.5155** Microscope slides 76 x 26 mm white glass, grinded edges. 50 pieces
- PB.5157-W** Microscope slides 76 x 26 mm, grounded, White frosted side, 50 pieces
- PB.5157-B** Microscope slides 76 x 26 mm, grounded, Blue frosted side, 50 pieces
- PB.5160** Microscope slides 76 x 26 mm with concavity, grinded edges. 10 pieces
- PB.5165** Cover glasses 18 x 18 mm, thickness 0.13-0.17 mm. 100 pieces

- PB.5168** Cover glasses 22 x 22 mm, thickness 0.13-0.17 mm. 100 pieces
- PB.5170** Cover glasses Ø18 mm, thickness 0.13-0.17 mm. 100 pieces

MICROSCOPE SLIDE BOXES

- PB.5181** Black plastic slide box for 25
- PB.5180** Wooden slide box for 25 slides. White interior with index
- PB.5185** Black plastic slide box for 100 slides



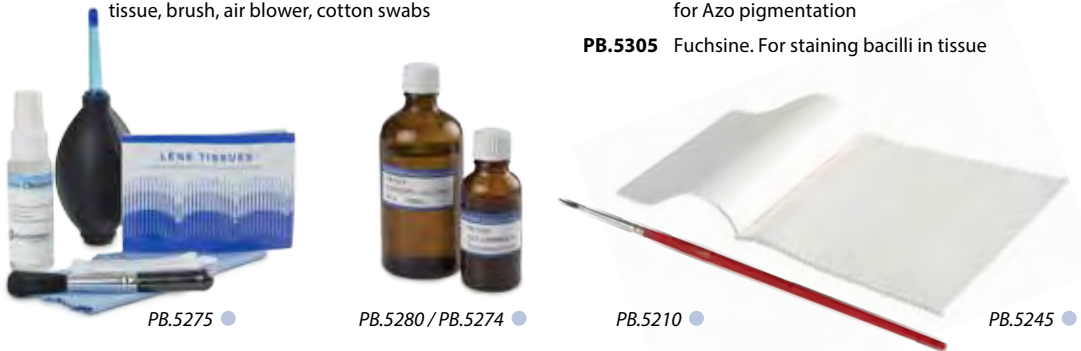
STAINS

Stained samples/cells enable better visualization under the microscope.
Euromex offers a range of common stains



MISCELLANEOUS ACCESSORIES

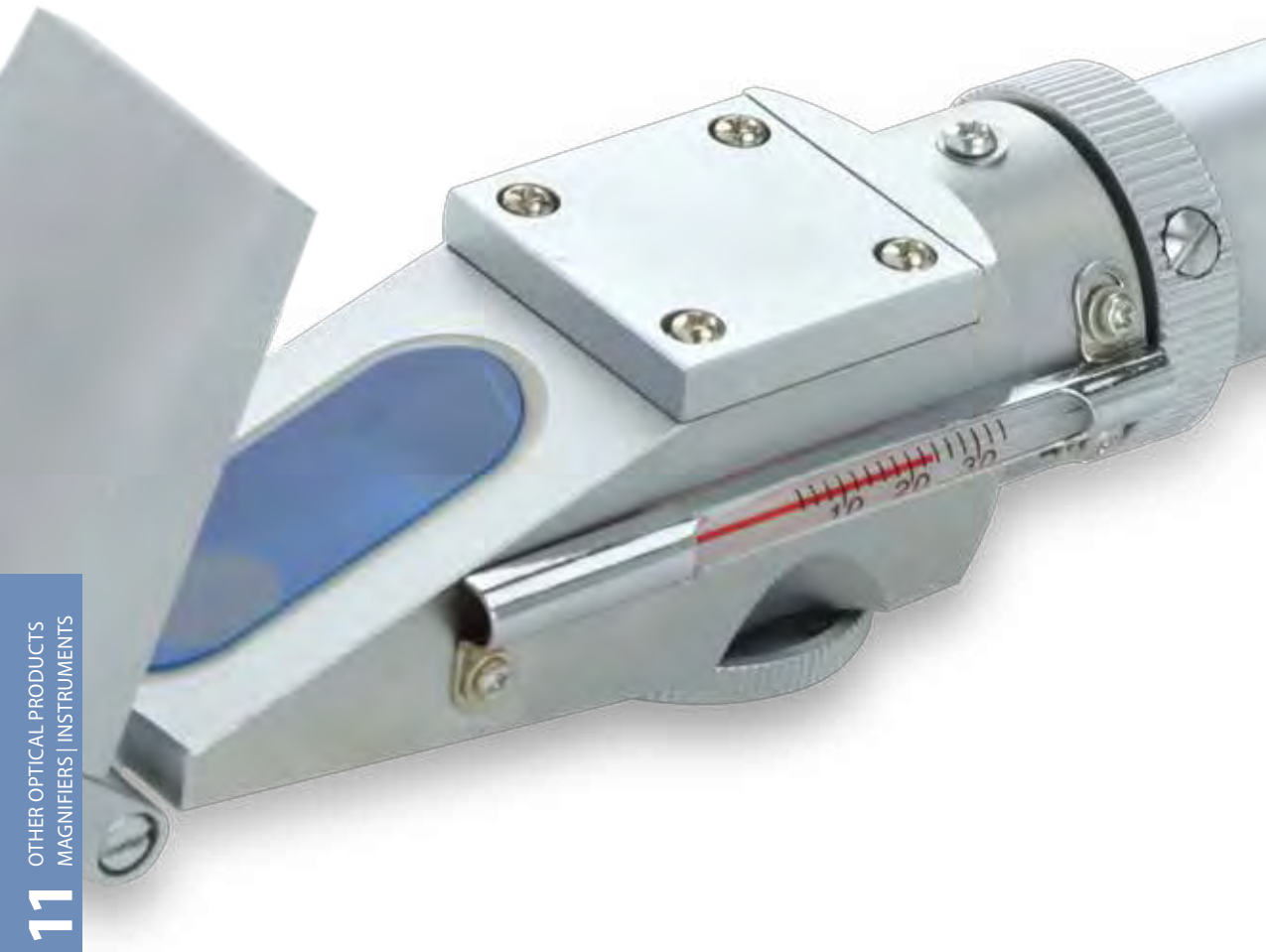
- PB.5200** Staining trough for 10 slides
- PB.5210** Fine pointed brush
- PB.5245** Lens paper. 100 sheets
- PB.5250** Solid paraffin. Melting point 60°C, 200 grams packed
- PB.5255** Immersion oil, refractive index nD = 1.482. In bottle (25 ml)
- PB.5265** Entellan, quick drying Canada balsam. In bottle (25 ml)
- PB.5270** Xylol (bottle), lens cleaner, intermediate agent for section slide preparation. In bottle (100 ml)
- PB.5274** Isopropyl alcohol 99%. In bottle (200 ml)
- PB.5277** Formalin 40%, fixing agent. In bottle (200 ml)
- PB.5275** Cleaning kit: lens cleaning fluid, lint free lens tissue, brush, air blower, cotton swabs



(DISSOLVED) STAINS

- Supplied in 25 ml bottles
- PB.5280** Azo carmine-G. Biological stains for animal tissues. Also suitable for bacteria pigmentation
 - PB.5283** Eosin yellow. Stain for general overall-view coloring
 - PB.5286** Haematoxylin according to Ehrlich. General purpose nuclear stain
 - PB.5289** Astra Blue. Stain for vegetal cells. To be used in combination with safranin
 - PB.5292** Orange-G, stain for most elementary structures of animal tissues
 - PB.5295** Safranin. A general stain for showing nuclei and cellulose walls. To be used in combination with Astra Blue
 - PB.5297** Methylene Blue. Biological and bacteriological stain
 - PB.5300** Analin Blue, to be used as third color for Azo pigmentation
 - PB.5305** Fuchsin. For staining bacilli in tissue

RefractoMeters



Refractometers are used for the identification of substances and concentration measurement of fluids. Because the refractive index (R.I.) of a solution is proportional to the concentration it is easy to identify the substance or to measure the purity and concentrations of solutions

The Euromex refractometers are calibrated at 20° Celsius. Most refractometers are equipped with Automatic Temperature Compensation (ATC)

REFRACTOMETERS



RF.5562

Handheld refractometers

Sugar concentration

A few drops on the measurement prism of the refractometer are sufficient to read the refraction index of a liquid under test. The reflected light beam projects a shadow line onto a small glass reticle inside the instrument. The line and scale can be read through a magnifying eyepiece. The reading of most refractometers are corrected with an automatic temperature compensation (ATC)

The food industry intensively uses refractometers to determine the exact Brix concentration in marmalades, fruit, fruit juices, honey, treacle, wine and other food products. In the chemistry and oil industry refractometers are used to measure water/oil emulsions

All refractometers are equipped with an ATC (except RF.5190) and are supplied with specific scales

Concentrations of sugar in marmalades, fruits, honey, syrups, wine and monitoring of oil emulsions

MODELS	Scales	Accuracy	ATC	Analog	Model	Scales	Accuracy	ATC	Analog
RF.5190	0-90 Brix	0.2 Brix		•	RF.5562	28-62 Brix	0.2 Brix	•	•
RF.5510	0-10 Brix	0.1 Brix	•	•	RF.5580	0-80 Brix	0.5 Brix	•	•
RF.5520	0-20 Brix	0.1 Brix	•	•	RF.5582	40-82 Brix	0.5 Brix	•	•
RF.5532	0-32 Brix	0.2 Brix	•	•	RF.5592	58-92 Brix	0.5 Brix	•	•

HIGHLIGHTS

- Portable
- Accurate
- Fast
- Automatic Temperature Correction (ATC)



RD.6535

Digital handheld refractometers

Sugar concentration in juices

A focused light beam of a LED source is reflected by the substance on a linear array of photo diodes The refractometer correlates the position of the light beam on the array of photo diodes to refractive index or to another unit of measurement related to the substance under observation. The value can be read from a digital LCD readout. The digital refractometers are equipped with an automatic temperature compensation (ATC)

Especially designed to measure sugar concentrations in fresh fruit juices. Latest technology for measuring refractive indices. The sample is illuminated by LED light source while an optical sensor measures the percentage of reflection from the sample. With the refractive index the device calculates the concentration

Units in Brix, °Oe (Oechsle) and °KMW. With ATC

Concentrations of grapes and fruit

MODEL	Scales	Accuracy	Remarks	ATC	Digital
RF.5635	0-140 °Oe	1 °Oe	Oechsle units	•	•
	0-32 Brix	0.2 Brix	Sugar concentration	•	
	0-25 °KMW	0.2 °KMW	Babo units	•	

Concentrations of sugar, nD indices (only for sugar)

MODELS	Scales	Accuracy	ATC	Digital
RD.5635	0-35 Brix	0.1 Brix	•	•
RD.5645	0-45 Brix	0.1 Brix	•	•
	1.33-1.40 R.I.	0.0001 R.I.		
RD.5665	28-65 Brix	0.1 Brix	•	•

REFRACTOMETERS



● 98.490

Abbe laboratory
refractometer
Substance identification

The Abbe laboratory refractometer is a bench-top instrument for high-precision measurements of an index of refraction. The Abbe refractometer is also suitable for determination of the refractive index of solid samples, such as glass, plastics, and polymer films. The instrument is equipped with a built-in thermometer and water connection to control fluid temperatures. Also equipped with a Brix and a refraction index scale and supplied with a test plate

Abbe refractometers are more accurate with an extended scale to measure concentrations of sugar and refractive indices. Capable of measuring all kinds of concentrations and identifying several types of substances

The Abbe refractometer can be connected to a water bath for measuring at a controlled temperature. During the use of this type of refractometer the use of a cold light source such as the LE.5209 is recommended
This Abbe table refractometer has scales for measurement of sugar concentrations and refractive indices. Delivered with carrying case, thermometer 0-50° Celsius, calibration plate and adjusting tool

Substance identification of sugar concentration

MODEL	Scales	Accuracy	Remarks	Analog
98.490	0-95 Brix	0.5 Brix	Abbe table refractometer without light source	•
	1.300-1.700 RI	0.0002 RI		

HIGHLIGHTS

- Portable
- Accurate
- Fast
- Automatic Temperature Correction (ATC)

Gemological
refractometer
Gemstones



● RF.5381

Gemological refractometers are the key instruments for research in gemological laboratories. Gemstones can be examined using the optical principles on which these refractometers are based

Refractive index, one of the principal properties used in determining the type of a gemstone, is a material constant, dependent on the chemical composition of a substance. This allows users to identify gem materials by measuring their refractive index

Determination of the refractive index is done at the wavelength of the sodium line D-line (NaD) of ~589 nm. This is filtered out from daylight with a dedicated optical filter

Identification of precious stones

MODEL	Scales	Accuracy	Remarks	Bench-top instrument	Analog
RF.5381	1.30-1.81 I.R.	0.01 I.R.	With filter 590 nm	•	•

REFRACTOMETERS

The Euromex refractometers are ideal for determining concentrations, testing and measuring of fluids



Handheld Refractometers
Alcohol and alcohol-sugar solutions

Measure concentrations of alcohol, sugar and alcohol-sugar % solutions. Using refractometers permit the growers to choose the moment of the vintage by monitoring the “must”. With ATC

Sugar concentration, % alcohol and alcohol/sugar solutions

MODEL	Scales	Accuracy	ATC	Analog
RF.5625	0-25%	0.2 %	•	•
	0-40 Brix	0.2 Brix		

Sugar and salt

For concentrations of salt, water-soluble salt solutions of sugar. The handheld refractometers are equipped with a Brix scale. With ATC

Substance identification of sugar concentration

MODEL	Scales	Accuracy	ATC	Analog
RF.5610	0-100 ‰	1 ‰	•	•
	0-10 Brix	0.1 Brix		

Substance identification of sugar concentration

MODEL	Scales	Accuracy	ATC	Digital
RD.5728	0-28 %	0.1%	•	•
	0-35 Brix	0.1 Brix		
	1.30-1.39 RI	0.0001RI		



Battery acid and Coolant

Testing water-soluble coolants and battery acid solutions. The refractometer features a coolant temperature scale for ethylene glycol and propylene glycol. It also has a specific acid. With ATC



For testing water-soluble coolants and battery acid solutions.

MODEL	Scales	Accuracy	Remarks	ATC	Analog
RF.5650	1.15-1.30 RI	0.01RI	Battery acid	•	•
	0/-50 °C	5 °C	Ethylene glycol		
	0/-50 °C	5 °C	Propylene glycol		

Clinical applications

Clinical refractometers are commonly used to measure Serum Protein, Specific Gravity of Urine and Refractive Index. With ATC



For measuring clinical applications as Serum Protein, Specific Gravity of Urine and Refractive Index

MODEL	Scales	Accuracy	Remarks	ATC	Analog	MODEL	Scales	Accuracy	Remarks	ATC	Digital
RF.5612	0-12 g/dl	0.2 g/dl	Proteins in Serum	•	•	RD.5712 ⁽¹⁾	0-12 g/dl	0.2 g/dl	Proteins in Serum	•	•
	1-1.05 sg	0.002 sg	Urine specific gravity	•	•		1-1.05 sg	0.001 sg	Urine specific gravity	•	•
	1.333-1.360 RI	0.0005 RI		•	•		1.33-1.39 RL	0.0001 RL		•	•

⁽¹⁾ With this model the value can be read from a digital display

ACCESSORIES AND SPARE PARTS

- RF.5295** Test slide 78.8 Brix for calibration of RF.5190
- RF.5384** 5 ml immersion nD 1.79 liquid for RF.5381
- LE.5209** 20 W 12 V cold light source with single fiber light conductor (for Abbe refractometer 98.490)

- SL.5208** Spare 20 W 12 V halogen bulb
- 98.492** Thermometer 0-50° C (for Abbe refractometer 98.490)
- 98.496** Calibration slide nD 1.5163 (for Abbe refractometer 98.490)

Polarimeters & Spectroscopes



A polarimeter measures the rotation angle of polarized light traveling through an optically active substance. The rotation angle of the polarization plane of linear polarized light is different for each optical active substance as described in the Law of Biot

Polarimetry is a non-destructive test method for measuring optical activity of organic and inorganic substances. It is very useful to analyze expensive non-reproducible samples. Polarimeters are extensively used for quality and process control in research laboratories in the chemical and food industry

Spectroscopes are used to visualize the light spectrum of light sources

POLARIMETERS



Polarimeter

99.400

Polarimeters are suitable for fast and accurate measurements of sugars, glucose, perfume, chemical substances and medical drugs. Equipped with a built-in 230 V 589.3 nm sodium lamp with ballast for 230 volt operation with cable and plug

Polar scale, range $\pm 180^\circ$ with 0.1° readings. Supplied with observation tubes of 100 mm and 200 mm. Bright light measuring field permits reading with accuracy of 0.1° with aid of Vernier

Range 0- 180° to left and right. Accuracy 0.1° . Polarizing device: Glan Thomson prism and Laurent Quartz plate

HIGHLIGHTS

- The polarimeters are delivered with 100 and 200 mm observation tubes
- Equipped with a built-in 230 V 589.3 nm sodium lamp
- Fast and accurate
- Short warm-up time

ACCESSORIES FOR 99.400

- 99.410** Measuring tube, 100 mm long
- 99.415** Measuring tube, 200 mm long
- 99.430** Cover glass for measuring tube \varnothing 15 mm
- 99.431** Rubber ring (for 99.430)
- 99.197** Spare sodium 589.3 nm lamp

MODEL	Scales	Accuracy	Observation tubes 100 and 200 mm	230 V sodium lamp (with 589.3 nm filter)
99.400	$\pm 180^\circ$	$\pm 0.1^\circ$ polar scale	•	•

SPECTROSCOPES

Euromex handheld spectrosopes are used for optical experiments in natural sciences, industry and education



Euromex handheld spectroscope
SP.5200

Handheld spectroscope with adjustable slit, comparison prism, mirror, five glass mini-cuvettes and wavelength scale 400 - 700 nm with 589 nm indication. Divisions 10 nm

- Direct vision type
- Adjustable eye lens
- Adjustable slit 0 - 1 mm
- Angle dispersion C - F 7°
- Linear dispersion 60 mm
- Comparison prism for comparison between products
- Mirror
- 5 Glass cuvettes
- Wavelength scale 400 - 700 nm



SP.5200

MODEL	Dimensions	Weight (grams)	Adjustable slit	Comparison prism	Angle dispersion	Linear dispersion	Wavelength scale	589 nm indication	With 5 glass cuvettes
SP.5200	h50x115xp23	250	0-1 mm	•	C-F 7°	60 mm	•	•	•

Euromex handheld spectroscope
SP.5155

Handheld spectroscope with adjustable slit and comparison prism, mirror and five glass cuvettes

- Comparison prism
- Mirror
- Five glass cuvettes
- Direct vision type
- Adjustable eyelens
- Adjustable slit 0 - 1 mm
- Angle dispersion C - F 7°
- Linear dispersion 60 mm



SP.5155

MODEL	Dimensions	Weight (grams)	Adjustable slit	Comparison prism	Angle dispersion	Linear dispersion	Wavelength scale	589 nm indication	With 5 glass cuvettes
SP.5155	h45x1105xd23	125	0-1 mm	•	C-F 7°	60 mm			•

Handheld spectroscope
SP.5150

Handheld spectroscope with adjustable slit from 0 tot 1 mm

- Direct vision type
- Adjustable eye lens
- Adjustable slit 0 - 1 mm
- Angle dispersion C - F 7°
- Linear dispersion 60 mm



SP.5150

MODEL	Dimensions	Weight (grams)	Adjustable slit	Comparison prism	Angle dispersion	Linear dispersion	Wavelength scale	589 nm indication	With 5 glass cuvettes
SP.5150	90 x18 mm Ø	92	0-1 mm		C-F 7°	60 mm			

Handheld spectroscope
SP.5100

Handheld spectroscope with fixed slit

- Direct vision type
- Adjustable eye lens
- Fixed slit
- Angle dispersion C - F 6°
- Linear dispersion 40 mm



SP.5100

MODEL	Dimensions	Weight (grams)	Adjustable slit	Comparison prism	Angle dispersion	Linear dispersion	Wavelength scale	589 nm indication	With 5 glass cuvettes
SP.5100	90 x18 mm Ø	72			C-F 6°	40 mm			



PATHOLOGY SCANNER

PS.1001

PathoScan
10,000 DPI slide scanner

In pathology, histology and other medical fields, medical professionals look at tissue slides under a microscope. Often the tissues are stained to highlight certain structures enabling the specialists to perform their analysis. Euromex offers a digital solution for these specialists

The PathoScan digital microscope slide scanner produces quick, reliable and high-resolution digital images of cells. Once the slides are digitized there are numerous advantages against classic microscopy

The users now have the ability to upload the scanned images onto a network for sharing and collaboration among colleagues, resolving in better and faster diagnostics. The scanned slides can also be used for education purposes. Digitized slides also can be analyzed using the specialists own dedicated software. The software can be used to automate the manual counting of structures, or for classifying the condition of tissue such as is used for grading tumors

PATHOVIEW SCANNING SOFTWARE

- Easy Preview and Scan Slide
- Quick setting exposure time
- Scan resolution from 1,000~10,000 dpi
- File format: TIF and JPEG
- Images can also be used with ImageFocus Alpha basic microscopy analysis software, see chapter 9.

PS.1001		
Dimensions		Weight
(h) 70 x (w) 150 x (d) 260 mm		1.0 kg

HIGHLIGHTS

- Supports standard microscopy slide 76 x 26 mm
- From basic histology research to Life Science education
- Scans full slide
- Simple user interface
- Superior quality, 3-line CCD sensor
- 48-bit, 10,000 dpi, 5 µm resolution
- Industry-leading scanning speeds
- Holder for two slides included
- Polarization attachment available



PS.1001 / PS.3001

SPECIFICATIONS

Resolution	10,000 x 10,000 dpi
Scan mode	Color
Dynamic Range	3.8
Scanning Area	24.3 x 36.5 mm (H x W)
Scanning medium	76 x 26 mm slides
File Format	Saving in JPG, TIFF format
Light Source	Transmission white LED
Operating System	Windows 7/8/10 Intel-based Mac OS X 10.5/10.6 /10.7/10.8
Power supply	100- 240 AC Adapter, 12 V 1.5 A
Supplied with	Double slide holder, 100-240 V power supply, USB-2 cable, PathoView scanning software and user manual
Model	PS.1001

MODELS

PS.1001	PathoScan 10,000 DPI slide scanner
PS.3001	Double slide holder
PS.3002	Polarization slide holder, for one slide