

# Tester Stand Installation and Maintenance



Made in the  
United States of America



Figure 1. EMIT 50415 Tester Stand

## Description

The EMIT 50415 Tester Stand is designed as a mounting alternative for the SmartLog V4™, SmartLog V5™ and Dual Independent Testers.

The 50415 Tester Stand is compatible with the following EMIT items:

Item	Description
50404	Dual Independent Footwear Tester, North America
50412	Dual Independent Footwear Tester, No Power Adapter
50407	Dual Independent Footwear and Wrist Strap Tester, North America
50413	Dual Independent Footwear and Wrist Strap Tester, No Power Adapter
50562	Dual Independent Footwear and Wrist Strap Tester, Europe
50741	SmartLog V4™, North America
50743	SmartLog V4™, Asia
50747	SmartLog V4™, Europe
50751	SmartLog V4™, 10mm Adapter, Europe
50766	SmartLog V5™, North America
50767	SmartLog V5™, Asia
50768	SmartLog V5™, Europe
50769	SmartLog V5™, Europe, with 10mm Adapter

## Packaging

- 1 Pedestal
- 1 Baseplate
- 2 Socket Head Screws, 1/4-20 x 3/4"
- 2 Pan Head Screws, 10-32 x 5/8"
- 2 Nuts, 10-32
- 4 Pan Head Screws, #4 x 3/4"

## Installation

### Pedestal, Baseplate and Foot Plate

1. Insert the pedestal to the baseplate with the mounting bracket sloping toward the operator. Be sure to align the screw holes located at the base of the pedestal.
2. Use the two 1/4-20 socket cap screws to secure the pedestal to the baseplate.

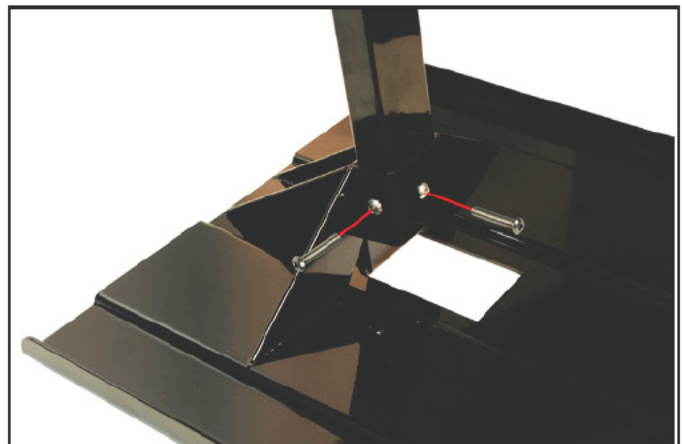


Figure 2. Securing the pedestal to the baseplate using the 2 socket cap screws

3. Route the foot plate cord / cable through the pedestal. Feed the cord from the bottom and have it exit through the top.

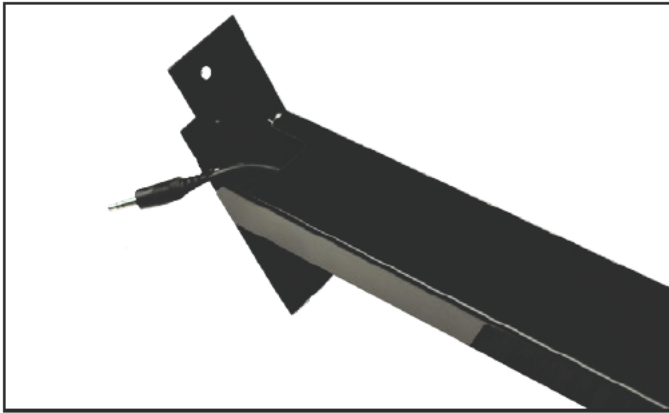


Figure 3. Routing the foot plate cord through the pedestal

4. Insert the foot plate cord / cable into the jack located at the back of the foot plate.
5. Fit the dual foot plate into a position so that is flush with the front and top of the baseplate. Secure the dual foot plate to the baseplate using the four included #4 pan head screws.

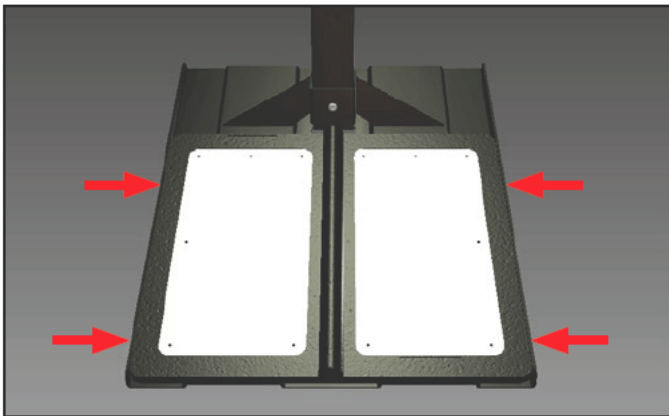


Figure 4. Securing the dual foot plate to the baseplate

### SmartLog V5™

1. Align the top and bottom holes of the SmartLog's mounting bracket to the two holes located on the pedestal's mounting platform. Secure the SmartLog's mounting bracket using the two included 10-32 pan head screws and nuts.

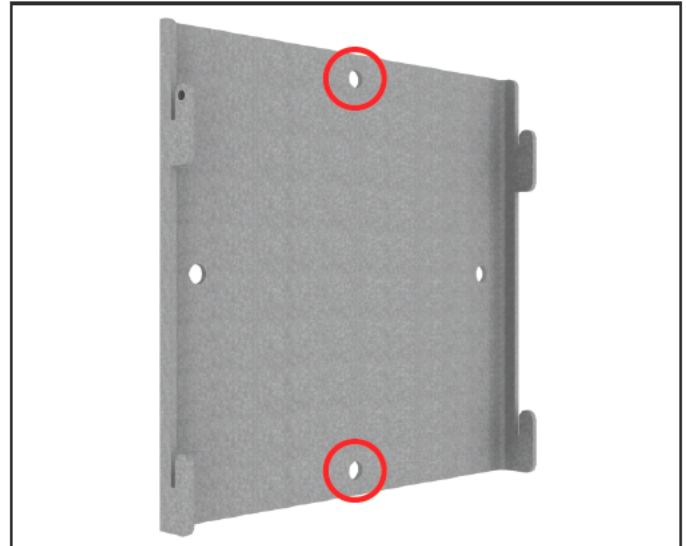


Figure 5. Mounting holes on the SmartLog V5™ mounting bracket

2. Connect the SmartLog V5™ to the mounting bracket. Use the SmartLog's thumbscrew to secure the SmartLog as shown below.



Figure 6. Connecting the SmartLog V5™ to the bracket

3. Connect the ground cord, foot plate cable, Ethernet cable (or RS-232 communication cable) and power adapter to the SmartLog V5™.
4. Route all cables through the openings located at the bottom and backside of the cover. Secure the cover to the SmartLog with the included thumb screw. All cables should exit the SmartLog as shown below.



Figure 7. Routing the cables out of the SmartLog V5™

5. Connect the ground cord's ring terminal to a known ground point. Connect the foot plate cable to the foot plate. Verify that the Ethernet cable is connected to your network (or use the serial port adapter to connect the RS-232 cable to your PC).
6. Power the SmartLog V5™. The display will turn on and the tester LEDs will blink then turn off. If the footwear status LEDs continue to blink, inspect the foot plate cable and verify that it is securely connected at both terminals.



Figure 8. Using the EMIT 50415 Stand with the SmartLog V5™

## SmartLog V4™

1. Align the two mounting holes of the yellow backplate to the mounting holes on the pedestal mounting bracket. Secure the backplate using the supplied screws and nuts.

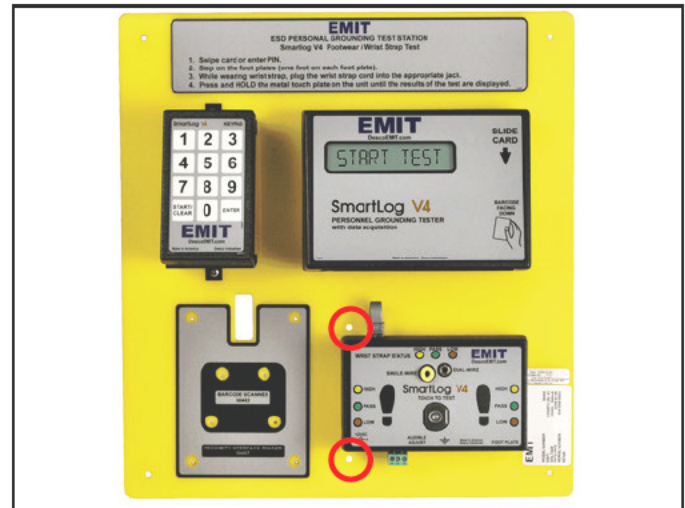


Figure 9. Mounting holes on the SmartLog V4™

2. Connect the foot plate cord into the "FOOT PLATE" jack located at the bottom of the SmartLog tester.
3. Ground the tester using the green ground cord packaged with your SmartLog. Insert the banana plug terminal into the ground jack located at the bottom of the SmartLog tester and connect the other terminal to ground.
4. Connect the SmartLog's power adapter to the power jack located at the back of the SmartLog clock. Plug the power supply into an appropriate power outlet.



Figure 10. Using the EMIT 50415 Stand with the SmartLog V4™

## Dual Independent Tester

1. Align the two mounting holes of the yellow backplate to the mounting holes on the pedestal mounting bracket. Secure the backplate using the supplied screws and nuts.

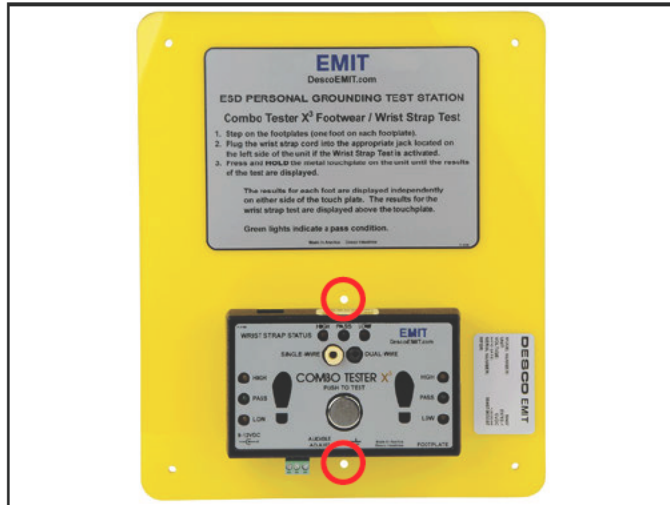


Figure 11. Mounting holes on the Dual Independent Tester

2. Connect the foot plate cord into the "FOOT PLATE" jack located at the bottom of the tester.
3. Ground the tester using the green ground cord packaged with your tester. Insert the banana plug terminal into the ground jack located at the bottom of the tester and connect the other terminal to ground.
4. Connect the tester's power adapter to the power jack located on its left side. Plug the power supply into an appropriate power outlet.



Figure 12. Using the EMIT 50415 Stand with the Dual Independent Tester

## Specifications

Baseplate Dimensions	16" x 20" (40.6 cm x 50.8 cm)
Stand Height	38" (96.5 cm)
Weight	23 lbs (10.4 kg)

### Limited Warranty, Warranty Exclusions, Limit of Liability and RMA Request Instructions

See EMIT's Warranty -

<http://emit.descoindustries.com/Warranty.aspx>